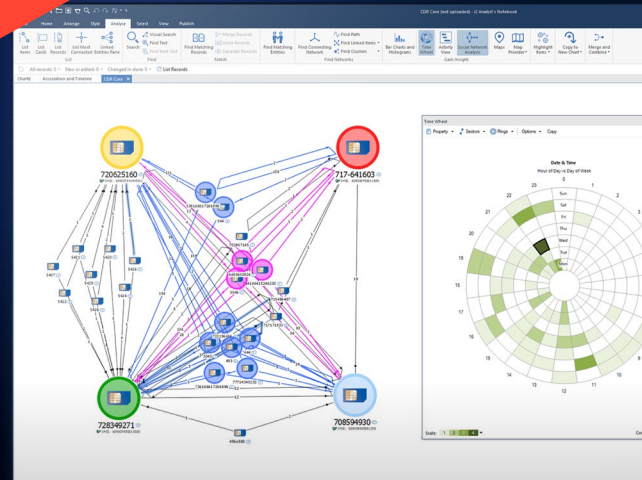




Analyst's Notebook

i2group.com/solutions



Discover and deliver actionable intelligence.

i2® Analyst's Notebook® is an advanced visual analysis software tool designed to support analysts in their investigations to combat criminal activities.

Highlights

- Reduce the time to deliver rich, actionable intelligence from complex sets of disparate data.
- Identify connections, patterns, and key intelligence that might otherwise be missed.
- Increase understanding of complex criminal, terrorist, and fraudulent networks.
- Clearly communicate findings by simplifying the presentation of complex information.
- Build a single cohesive intelligence picture to enable more informed and effective operational decision making.

The intuitive, modern user experience reduces user familiarization times, which enables users and organisations to quickly leverage their data and gain insights. A flexible data model and comprehensive range of visual analysis tools help users to discover key individuals, connections, relationships, events, patterns and trends that may have been missed. It also includes Social Network Analysis capabilities designed to deliver increased comprehension of social relationships and structures within networks of interest.

The results gained from this detailed analysis can then be shared with intuitive visual briefing charts or as independent visualizations which can easily be included in other intelligence reports. These visualizations can simplify the communication of sometimes complex information, which helps to create more timely and accurate operational decision making.

Analyst's Notebook provides a single environment for users to collate, analyze and share data and the resulting intelligence outcomes.

Analyst's Notebook, users gain rich visual analysis capabilities that quickly turns complex sets of disparate information into high-quality, actionable intelligence. This helps them and those involved in intelligence analysis identify, predict, and avoid criminal, terrorist and fraudulent activities.

Trusted for 30+ years.
Used by 1,000+ organizations.

Designed for government agencies and private sector businesses in their fight against increasingly sophisticated criminal and terrorist organizations.

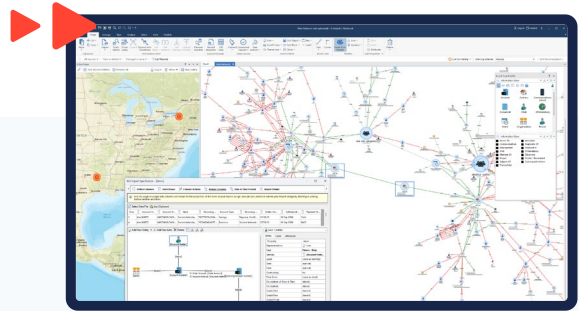
Key Features

Analyst's Notebook



Flexible data acquisition

Analyst's Notebook provides a range of tools to quickly acquire the wide variety of information that intelligence analysts regularly need to manage. This flexible approach to data acquisition enables users to input a broad range of data types, such as call records, financial transactions, IP logs, and mobile forensics data.



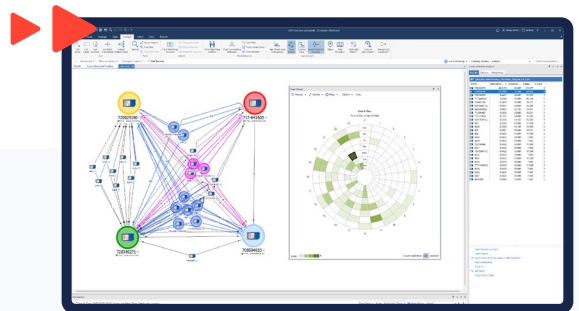
- Rapidly import structured data in an analysis ready form with a wizard-style visual importer.
- Simplify the manual data entry process with an intuitive drag and drop data input mode.
- Connect to and query available data sources via numerous data acquisition extensibility options.

Model data to support the investigation

The flexibility of Analyst's Notebook for managing data provides users with the freedom to utilize complex relational data. With Analyst's Notebook, users have the flexibility to model and visualise data in a way that best suits their analysis.

It provides an environment where information can be organized in the most relevant and effective way that is best suited to the analysis to be performed.

The visualization environment allows information to be presented in association or timeline charts. Data on these charts can be represented as entities, links, events, timelines or attributes, depending on the structure of the data and the analysis requirements.

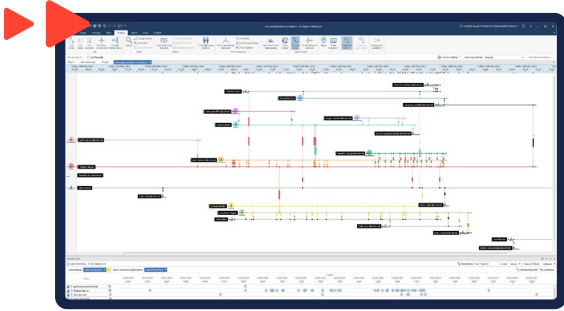


This helps to improve the analysis and visualization of a wide range of data sets by enabling users to:

- Quickly turn data into easily understandable visualizations to aid the analysis of complex scenarios.
- Represent information to best suit the data to be analyzed with extensive network and temporal options.
- Perform both analysis and intelligence.

Powerful analysis that reveals insights

Analyst's Notebook provides a wide range of analysis capabilities. The extensive analysis environment enables users to quickly gain an understanding of the data and pinpoint key intelligence. Analysis tools include the ability to create multiple views on data of interest: association, temporal, spatial, statistical, and spreadsheet views.



These multiple views help to give a better understanding of the important who, what, where, when and why aspects of the data. These capabilities can help analysts to quickly analyze complex data sets and enables users to:

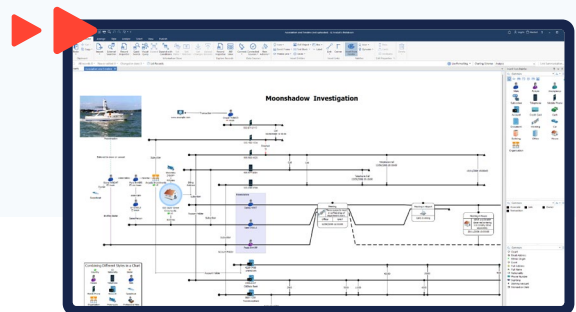
- Quickly highlight key individuals and relationships and their connections to key events with core link analysis capabilities.
- Understand the critical timeline of events or patterns within criminal activities with powerful temporal analysis tools.
- Gain better insight and understanding of the structure, hierarchy and operations of complex networks with integrated Social Network Analysis tools.
- Identify potential important intermediaries between seemingly unconnected entities in a network.
- Instantly highlight potentially key information in communications and transactional data.
- Combine association, temporal and geospatial aspects of data with multi-dimensional analysis views.

Transform complex data into actionable intelligence

While the discovery and development of intelligence is key, it is equally important that analysts can effectively share critical findings in a clear and concise manner. Analyst's Notebook allows users to communicate complex data with intuitive and easy-to-follow visual briefing charts.

The effective dissemination of data is vital to aid operational decision makers to make rapid, accurate, and informed decisions.

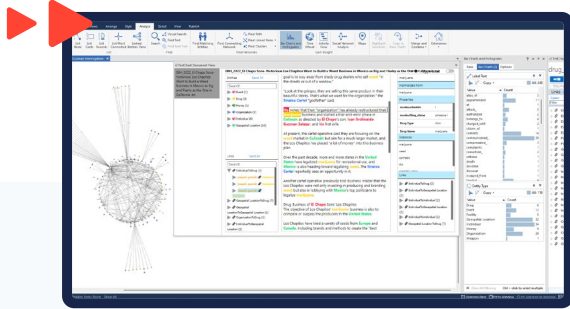
- Communicate complex data with intuitive and easy-to-follow visual briefing charts.
- Create detailed charts and visualizations to enhance other intelligence products.
- Produce redacted versions of charts to easily share the right level of information to others with differing security clearances.
- Share charts with non-Analyst's Notebook users with the freely available i2 Chart Reader.



Redacted versions of charts can also be produced to ensure the correct level of information is shared according to security clearances.

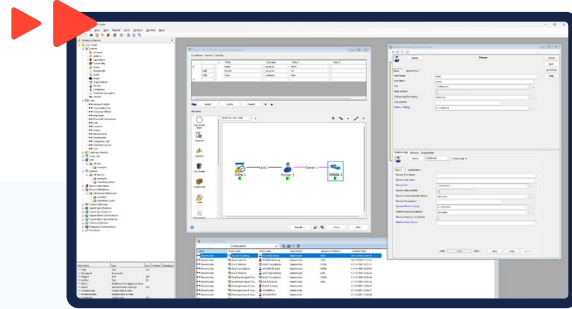
Extend your team's capabilities

An extensive range of options are also available to extend its capabilities to provide even greater value to analysts and the wider organization.



i2 Text Chart

- Geospatial Analysis — **i2 Analyst's Notebook Connector for Esri and i2 Esri Maps**
- Unstructured Data Analysis — **i2 TextChart**
- Collaboration and Data Acquisition — **i2 Analyze (with Analysis Studio or Analysis Hub) and i2 iBase**
- Customization — **i2 Analyst's Notebook SDK**



i2 iBase

An intuitive database application designed to help collaborative teams of analysts capture, discover and understand connections in volumes of complex structured and unstructured data.

iBase is not just another repository. It provides rich analysis and visualization capabilities to help identify cohesive networks, patterns and trends, together with dissemination tools to support faster and more informed decision making.

Other solution packages

Analysis Hub is for multidisciplinary teams that need all the benefits of Analysis Studio but at an enterprise level, to enable investigations to take advantage of centralized data. It makes the analyst's task of managing and exploiting multiple data sources much easier by making available analysis-ready data in a common location. The centralized data store also allows other users to exploit and view the same data in different ways to suit their role or use case.

Analysis Studio extends Analyst's Notebook with features that enable analysts to connect and search data sources on demand and improve collaboration by securely sharing intelligence. It also includes a web client to make it simpler and more convenient for a broader set of users to work with charts.

To find out more, talk to our experts today...



i2 Group is the global leader in advanced visual analysis solutions delivering actionable intelligence to combat all threats including crime, terrorism, war and fraud; whether locally or internationally.

Intelligence Amplified™

i2group.com

hello@i2group.com

