

i2

# Analysis Hub National Security Solutions

**Accelerate the data-to-decision process by rapidly transforming overwhelming data into actionable intelligence.**

## Analysis features

### ■ Improved situational awareness across your operational community

A sophisticated and feature-rich environment layers and analyzes human, event, geospatial, temporal and social network elements with existing or third-party data.

### ■ Smarter decision-making with near real-time analysis

Uncover hidden connections buried in terabytes of data in seconds, with the help of automated and assisted analytics, multidimensional visual analytics and near real-time results.

### ■ Interoperability, scalability and flexibility

Architecture supports and augments existing infrastructures and investments, while offering the freedom to roll out features and functions to meet the needs of multiple operating, mission, and user environments.

### ■ Cost-effective design

The modular, scalable and interoperable nature of Analysis Hub helps reduce training burden, and maintenance and deployment costs.

### ■ Short learning curve

A set of common visual analysis and data management tools and an intuitive, lightweight web interface enable shorter training times.

**Rapid insights for in-theater decision making.**

As national security and defense threats become more asymmetrical and complex, intelligence organizations and agencies are challenged to respond more efficiently and precisely.

With shrinking budgets and limited resources, these agencies need a solution that can help them accelerate the data-to-decision process, so they can make better informed decisions and take confident, effective action.

Analysis Hub is a next-generation intelligence solution designed to help do just that by applying advanced analytics rapidly and at scale.

## Analysis for complex data sets

Do you have large and overwhelming data sets to analyze?

With its scalable, extensible design, Analysis Hub helps organizations overcome information overload and perform intelligence analysis and analytics — at scale and at speed.

## Mission value

Every organization must control costs which means more than finding the lowest price for the first year. How costly is future expansion? How well does the solution work with existing systems?

The real value of Analysis Hub is readily apparent when the total cost of ownership is considered.

The i2 solution is scalable, modular and interoperable, allowing you to adapt your i2 environment to perform investigations as your mission requirements change.

## Scalable — to provide mission agility and flexibility

A year on, you can be sure people, systems or circumstances will be different than today. Analysis Hub scales across the mission, operational and user environments. This scalability provides a level of continuity for those who use these tools, while easing the training burden that often accompanies frequent personnel rotations.

## Modular and extensible — to support expansion and maximize mission flexibility

Analysis Hub has a modular architecture that provides mission flexibility. It can be made “fit for purpose” by deploying only the required components or by augmenting it with additional complementary analytic tools as needed.

For example, users can capitalize on the interoperability with GIS providers such as Esri, and incorporate advanced geospatial features, including three-dimensional mapping. Combine that with other built-in features, such as sub-second temporal analysis, social network analysis, and heat matrix capabilities for advanced analytics, it turns big data into usable intelligence.

## Interoperable — to increase compatibility and access to data sources

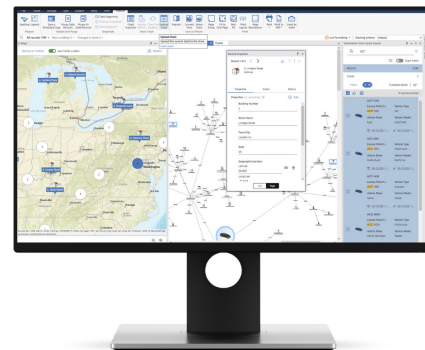
Analysis Hub integrates with existing infrastructure and third-party systems such as advanced GIS to take advantage of digital terrain elevation data and line-of-sight analysis.

It also eases dissemination and information sharing by helping streamline operations with partner or coalition organizations. Finally, it supports operational interoperability by enabling intelligence analysts to collaborate which in turn improves overall situational awareness.

## Why i2

Analysis Hub is the result of three decades of experience with more than 1,200 military organizations in 130 countries. This collaboration helps to ensure our solutions continue to be ‘fit for purpose’.

Today, i2 Analysis Hub is one of the analytical tools of choice for national security and military intelligence personnel at home and in the field:



- In Afghanistan, 35 out of 50 countries involved in the International Security Assistance Force use our solutions to help maximize the collection, analysis and dissemination of intelligence.
- In NATO, 25 of the 28 member countries use our intelligence solutions to help equip front-line troops with the right information at the right time.
- In the US, the intelligence community, Unified Combatant Commands, force protection and military law enforcement personnel use i2 intelligence solutions.

Analysis Hub is used around the world to analyze, process, integrate and disseminate all source data.

It is an industry leader in the exchange of intelligence between defense and national security organizations.

Contact us at [hello@i2group.com](mailto:hello@i2group.com) for more information.



[hello@i2group.com](mailto:hello@i2group.com)

[www.i2group.com](http://www.i2group.com)



i2 Group is a world-leader in intelligence analysis software. We empower intelligence analysts and investigators to discover, create, and disseminate actionable intelligence to identify the perpetrators of criminal activity.

Founded in Cambridge, UK in 1990, we have more than 30 years' experience in helping our users to solve complex problems. Our products have been proven in countless real-world operations and are relied upon by 35,000+ users in more than 140 countries.

©2023 i2 Group. All rights reserved. This publication is issued to provide outline information only. The company reserves any right to alter without notice the specification, design, or conditions of supply of any product or service. i2 Group is part of Harris Computer Corporation.

